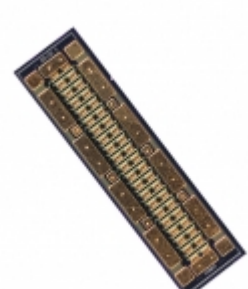


CGHV60075D5-GP4



A CREE COMPANY

Part Number: [CGHV60075D5-GP4](#)

Manufacturer: [Cree Wolfspeed](#)

Description: RF MOSFET HEMT 50V DIE

Data sheet: [CGHV60075D5](#)

RoHS Status: Lead free / RoHS Compliant

Ship From: Hong Kong

Shipment Way: DHL/Fedex/TNT/UPS/EMS

Images are for reference only.
See Product Specifications for product details.
Buy CGHV60075D5-GP4 with confidence from Components-Store.com, 1 Year Warranty

[Request For Quotation](#)

PRODUCT PARAMETER

Part Number	CGHV60075D5-GP4
Manufacturer	Cree Wolfspeed
Description	RF MOSFET HEMT 50V DIE
Lead Free Status / RoHS Status	Lead free / RoHS Compliant
Quantity Available	1926 pcs
Product Photo	CGHV60075D5-GP4.jpg
Category	Discrete Semiconductor Products
Voltage - Test	50V
Voltage - Rated	150V
Transistor Type	HEMT
Supplier Device Package	Die
Series	GaN
Power - Output	75W
Packaging	Tray
Package / Case	Die
Other Names	CGHV60075D CGHV60075D-ND CGHV60075D5 CGHV60075D5-ND
Noise Figure	-
Moisture Sensitivity Level (MSL)	1 (Unlimited)
Lead Free Status / RoHS Status	Lead free / RoHS Compliant
Gain	17dB
Frequency	6GHz
Detailed Description	RF Mosfet HEMT 50V 125mA 6GHz 17dB 75W Die
Current Rating	-
Current - Test	125mA

Components-Store.com is a Reliable Stocking Distributor of Electronic Components. We specialize in all Cree Wolfspeed series electronic components. We have 1926 pieces of Cree Wolfspeed CGHV60075D5-GP4 in stock available now. Request a quote from electronics components distributor at Components-Store.com, our sales team will contact you within 24 hours.

RFQ Email: info@Components-Store.com

RELATED PRODUCTS

	Part#: CGHV59070F Description: RF MOSFET HEMT 50V 440224	Manufacturers: Cree Wolfspeed In Stock: 273	RFQ
	Part#: CGHV60170D-GP4 Description: RF MOSFET HEMT 50V DIE	Manufacturers: Cree Wolfspeed In Stock: 636	RFQ
	Part#: CGHV40180F-TB1 Description: RF EVAL DEV KITS ISM	Manufacturers: Cree Wolfspeed In Stock: 153	RFQ
	Part#: CGHV59070F-TB Description: TEST FIXTURE FOR CGHV59070F	Manufacturers: Cree Wolfspeed In Stock: 193	RFQ
	Part#: CGHV40200PP-TB Description: DEV KIT	Manufacturers: Cree Wolfspeed In Stock: 178	RFQ
	Part#: CGHV50200F Description: RF MOSFET HEMT 40V 440217	Manufacturers: Cree Wolfspeed In Stock: 126	RFQ
	Part#: CGHV96050F2-TB Description: TEST FIXTURE FOR CGHV96050F2	Manufacturers: Cree Wolfspeed In Stock: 178	RFQ
	Part#: CGHV50200F-AMP Description: EVAL BOARD FOR CGHV50200	Manufacturers: Cree Wolfspeed In Stock: 81	RFQ
	Part#: CGHV96050F2 Description: RF MOSFET HEMT 40V 440210	Manufacturers: Cree Wolfspeed In Stock: 190	RFQ
	Part#: CGHV96100F2-TB Description: TEST FIXTURE FOR CGHV96100F2	Manufacturers: Cree Wolfspeed In Stock: 193	RFQ
	Part#: CGHV59350F-TB Description: TEST FIXTURE FOR CGHV59350F	Manufacturers: Cree Wolfspeed In Stock: 167	RFQ
	Part#: CGHV96050F1-TB Description: BOARD TEST FIXTURE FOR CGHV96050	Manufacturers: Cree Wolfspeed In Stock: 195	RFQ
	Part#: CGHV59350F Description: RF MOSFET HEMT 50V 440217	Manufacturers: Cree Wolfspeed In Stock: 79	RFQ
	Part#: CGHV59070F-AMP Description: EVAL BOARD WITH CGHV59070F	Manufacturers: Cree Wolfspeed In Stock: 119	RFQ
	Part#: CGHV96050F1 Description: RF MOSFET HEMT 40V 440210	Manufacturers: Cree Wolfspeed In Stock: 185	RFQ
	Part#: CGHV96100F2 Description: RF MOSFET HEMT 40V 440210	Manufacturers: Cree Wolfspeed In Stock: 133	RFQ
	Part#: CGHV40200PP Description: RF MOSFET HEMT 440199	Manufacturers: Cree Wolfspeed In Stock: 280	RFQ
	Part#: CGHV40320D-GP4 Description: RF MOSFET HEMT 50V DIE	Manufacturers: Cree Wolfspeed In Stock: 394	RFQ
	Part#: CGHV40180F Description: RF MOSFET HEMT 50V 440223	Manufacturers: Cree Wolfspeed In Stock: 218	RFQ
	Part#: CGHV60040D-GP4 Description: RF MOSFET HEMT 50V DIE	Manufacturers: Cree Wolfspeed In Stock: 2071	RFQ

Related keywords for CGHV60075D5-GP4

Cree Wolfspeed CGHV60075D5-GP4	CGHV60075D5-GP4 distributor	CGHV60075D5-GP4 supplier	CGHV60075D5-GP4 price
CGHV60075D5-GP4 download datasheet	CGHV60075D5-GP4 datasheet	CGHV60075D5-GP4 stock	buy CGHV60075D5-GP4
Cree Wolfspeed CGHV60075D5-GP4	Wolfspeed - a Cree company CGHV60075D5-GP4		

